

ER Locknuts

Code	Collet	A	B	Thread	Style
LNA-S11	ER11	19.0	11.3	14 X 0.75	17.0 A/F Hexagonal
LNA-S16	ER16	28.0	17.5	22 X 1.5	25.0 A/F Hexagonal
LNA-S20	ER20	34.0	19.0	25 X 1.5	30.0 A/F Hexagonal
LNA-S25	ER25	42.0	20.0	32 X 1.5	Round
LNA-S32	ER32	50.0	22.5	40 X 1.5	Round
LNA-S40	ER40	63.0	25.5	50 X 1.5	Round
LNA-S50	ER50	78.0	35.5	64 X 2.0	Round
LNA-M08	ER08	12.0	10.8	10 X 0.75	Mini
LNA-M11	ER11	16.0	12.0	13 X 0.75	Mini
LNA-M16	ER16	22.0	18.0	19 X 1.0	Mini
LNA-M20	ER20	28.0	19.0	24 X 1.0	Mini
LNA-M25	ER25	35.0	20.0	30 X 1.0	Mini



Hex - 11T, 16T, 20T



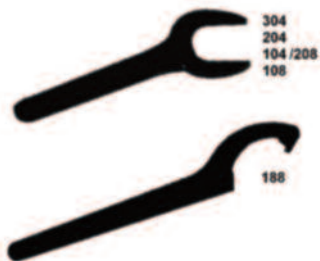
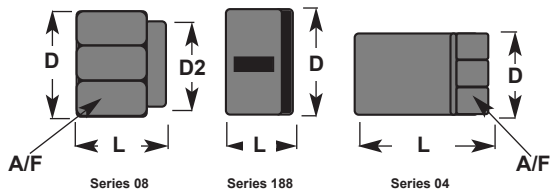
Round - 25T, 32T, 40T, 50T



Mini - M08, M11, M16, M20, M25

ER Wrenches

Code	Collet	Style
SP-WER11T	ER11	Hexagonal
SP-WER16T	ER16	Hexagonal
SP-WER20T	ER20	Hexagonal
SP-WER25T	ER25	Round
SP-WER32T	ER32	Round
SP-WER40T	ER40	Round
SP-WER50T	ER50	Round
SP-WER08M	ER08	Mini
SP-WER11M	ER11	Mini
SP-WER16M	ER16	Mini
SP-WER20M	ER20	Mini
SP-WER25M	ER25	Mini



DA Locknuts

Code	Collet	Style	Series	L	D	A/F	D2	Code	Collet
LNA208	DA200	Hexagonal	08	19.0	27.4	24.5	23.6	SP-WDA104	DA100
LNA108	DA100	Hexagonal	08	23.0	36.6	31.74	31.5	SP-WDA204	DA200
LNA188	DA180	Round	188	23.0	43.0	-	-	SP-WDA304	DA300
LNA304	DA300	Slimline	04	29.0	14.28	12.7	-	SP-WDA108	DA100
LNA204	DA200	Slimline	04	36.0	21.6	19.0	-	SP-WDA208	DA200
LNA104	DA100	Slimline	04	38.0	26.9	24.0	-	SP-WDA188	DA180

DA Wrenches



Shellmill/Combi Screws

Code	Spigot Size
SP-SMS16	16mm
SP-SMS22	22mm
SP-SMS27	27mm
SP-SMS32	32mm
SP-SMS40	40mm
SP-SMS-50	50mm

Combi Shellmill Drive Rings

Code	Spigot Size
SP-CDR16	16mm
SP-CDR22	22mm
SP-CDR27	27mm
SP-CDR32	32mm
SP-CDR40	40mm
SP-CDR50	50mm

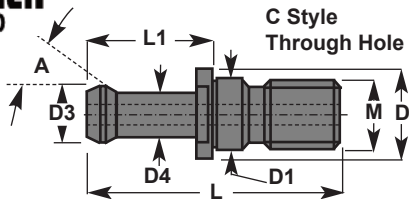
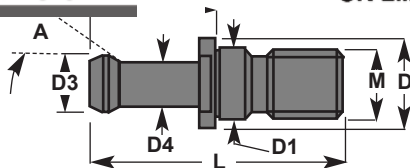
Combi & Shellmill Wrenches

Code	Spigot Size
SP-WSM16	16mm
SP-WSM22	22mm
SP-WSM27	27mm
SP-WSM32	32mm
SP-WSM40	40mm
SP-WSM50	50mm



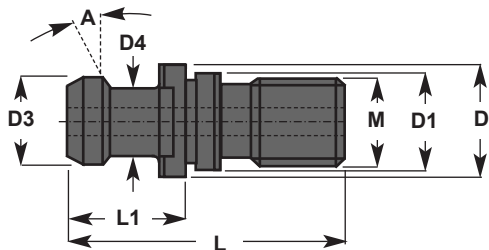
Weldon Screws

Code	Thread	Style
GS-0610G	M6 x 10 x 1.0	EM/WE06
GS-0810G	M8 x 10 x 1.25	EM/WE08
GS-1012G	M10 x 12 x 1.5	EM/WE10
GS-1216G	M12 x 16 x 1.75	EM/WE12/14
GS-1416G2	M14 x 16 x 2.0	EM/WE16/18
GS-1616G2	M16 x 16 x 2.0	EM/WE20
GS-1820G2	M18 x 20 x 2.0	EM/WE25
GS-2020G2	M20 x 20 x 2.0	EM/WE32/40
GS-2420G2	M24 x 20 x 2.0	EM/WE50



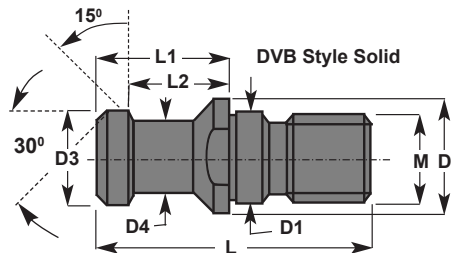
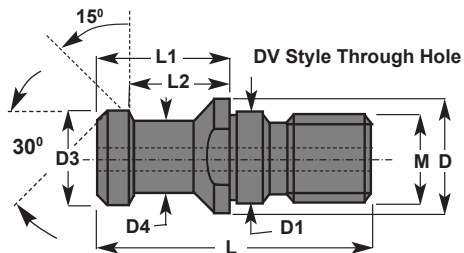
BT-MAS 403 Pullstuds

Code	A	M	L	L1	D	D1	D3	D4
RK30-BT1	45°	M12	43.0	23.0	16.5	12.5	11.0	7.0
RK30-BT2	60°	M12	43.0	23.0	16.5	12.5	11.0	7.0
RK40-BT1	45°	M16	60.0	35.0	23.0	17.0	15.0	10.0
RK40-BT2	60°	M16	60.0	35.0	23.0	17.0	15.0	10.0
RK40-BT3	90°	M16	60.0	35.0	23.0	17.0	15.0	10.0
RK50-BT1	45°	M24	85.0	45.0	38.0	25.0	23.0	17.0
RK50-BT2	60°	M24	85.0	45.0	38.0	25.0	23.0	17.0
RK50-BT3	90°	M24	85.0	45.0	38.0	25.0	23.0	17.0
RK30-BT1C	45°	M12	43.0	23.0	16.5	12.5	11.0	7.0
RK30-BT2C	60°	M12	43.0	23.0	16.5	12.5	11.0	7.0
RK40-BT1C	45°	M16	60.0	35.0	23.0	17.0	15.0	10.0
RK40-BT2C	60°	M16	60.0	35.0	23.0	17.0	15.0	10.0
RK40-BT3C	90°	M16	60.0	35.0	23.0	17.0	15.0	10.0
RK50-BT1C	45°	M24	85.0	45.0	38.0	25.0	23.0	17.0
RK50-BT2C	60°	M24	85.0	45.0	38.0	25.0	23.0	17.0
RK50-BT3C	90°	M24	85.0	45.0	38.0	25.0	23.0	17.0



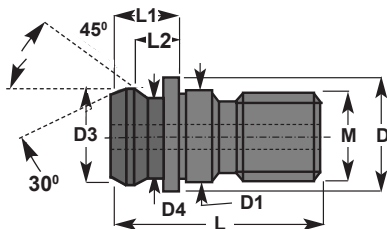
JIS-6339B Pullstuds

Code	A	M	L	L1	D	D1	D3	D4
RK40-JIS	15°	M16	54.0	29.0	23.0	17.0	19.0	14.0



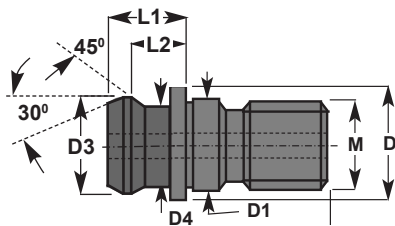
DIN69872 Pullstuds

Code	M	D	D1	D3	D4	L	L1	L2
RK30-DV	M12	17.0	13.0	13.0	9.0	44.0	24.0	19.0
RK40-DV	M16	23.0	17.0	19.0	14.0	54.0	26.0	20.0
RK50-DV	M24	36.0	25.0	28.0	21.0	74.0	34.0	25.0
RK30-DVB	M12	17.0	13.0	13.0	9.0	44.0	24.0	19.0
RK40-DVB	M16	23.0	17.0	19.0	14.0	54.0	26.0	20.0
RK50-DVB	M24	36.0	25.0	28.0	21.0	74.0	34.0	25.0



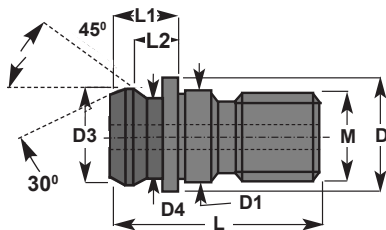
ISO7388/2-B Pullstuds

Code	M	D	D1	D3	D4	L	L1	L2
RK40-ISB	M16	22.5	17.0	18.9	12.9	44.5	16.4	11.1
RK50-ISB	M24	37.0	25.0	29.1	19.6	65.5	25.5	17.9



BT-MAS 403 Mazak Pullstud

Code	M	D	D1	D3	D4	L	L1	L2
RK40-YAM-BT	M16	22.0	17.0	18.79	12.44	44.10	19.10	14.02



DIN69871 CAT Mazak Pullstud

Code	M	D	D1	D3	D4	L	L1	L2
RK40-CV3	M16	21.8	17.0	18.79	12.44	41.25	16.25	11.17
RK50-CV3	M24	35.5	25.0	28.95	20.82	65.40	25.40	17.78