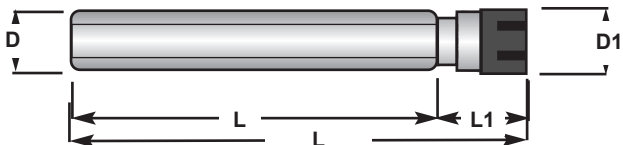


### Parallel Shank ER Collet Chucks - Standard Gauge Length

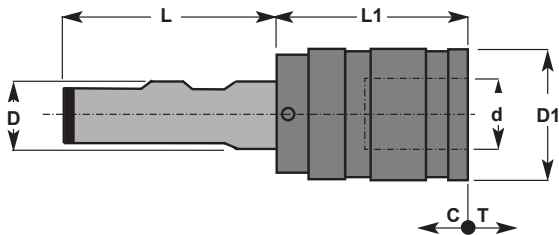
CODE	D	Collet	D1	L	L1
SS250-ER25-082F	25.0	ER25	42.0 Dia	50.0	32.0
SS250-ER25-132	25.0	ER25	42.0 Dia	100.0	32.0
SS250-ER32-104F	25.0	ER32	50.0 Dia	50.0	54.0
SS320-ER25-098	32.0	ER25	42.0 Dia	70.0	28.0
SS320-ER32-088F	32.0	ER32	50.0 Dia	50.0	38.0
SS400-ER25-112	40.0	ER25	42.0 Dia	70.0	42.0
SS400-ER32-100F	40.0	ER32	50.0 Dia	70.0	30.0
SS400-ER40-110	40.0	ER40	63.0 Dia	50.0	60.0

F - Denotes flatted shank



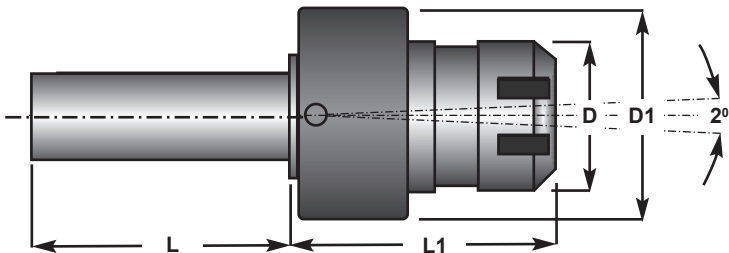
### Parallel Shank Slimline ER Collet Chucks - Mini Nut

CODE	D	Collet	D1	L	L1
SS080-ER08M-104	8.0	ER08	12.0 Dia	104.0	24.0
SS120-ER11M-125	12.0	ER11	16.0 Dia	125.0	25.0
SS120-ER16M-117	12.0	ER16	22.0 Dia	117.0	37.0
SS160-ER11M-122	16.0	ER11	16.0 Dia	122.0	22.0
SS160-ER11M-182	16.0	ER11	16.0 Dia	182.0	22.0
SS160-ER16M-167	16.0	ER16	22.0 Dia	162.0	37.0
SS200-ER16M-190	20.0	ER16	22.0 Dia	190.0	30.0



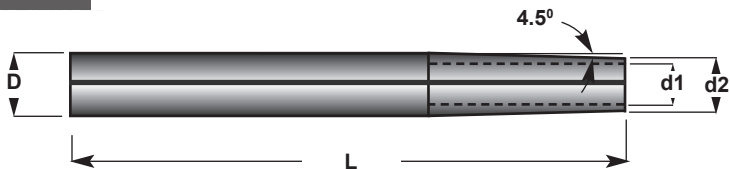
### Weldon Shank Tapping Heads - Tension & Compression

CODE	Collet	Range	C	T	D	D1	d	L	L1
SS200-TB1-090W	RC1/RS1	M3 - M12	7.5	7.5	20.0	36.0	19.0	51.0	39.0
SS250-TB1-092W	RC1/RS1	M3 - M12	7.5	7.5	25.0	36.0	19.0	53.0	39.0
SS250-TB2-116W	RC2/RS2	M8 - M20	12.5	12.5	25.0	53.0	31.0	53.0	63.0
SS320-TB3-184W	RC3/RS3	M14 - M33	20.0	20.0	32.0	78.0	48.0	60.0	124.0



### Parallel Shank ER Floating Reamer Holders

CODE	Collet	Shank Dia	D	D1	L	L1
SS200-FRH-ER16	ER16	20.0	32.0 Dia	40.0	46.0	50.0
SS250-FRH-ER32	ER32	25.0	50.0 Dia	61.0	46.0	70.0
SS320-FRH-ER32	ER32	32.0	50.0 Dia	61.0	50.0	70.0

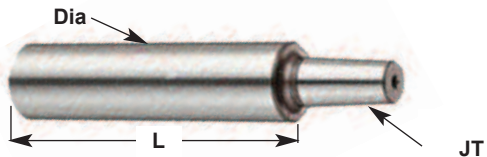


### Parallel Heat Shrink Extensions

CODE	D	d1	d2	L
SS120-TT03-080	12.0	3.0	8.0	80.0
SS120-TT03-120	12.0	3.0	8.0	120.0
SS120-TT03-160	12.0	3.0	8.0	160.0
SS120-TT04-080	12.0	4.0	8.0	80.0
SS120-TT04-120	12.0	4.0	8.0	120.0
SS120-TT04-160	12.0	4.0	8.0	160.0
SS160-TT03-080	16.0	3.0	8.0	80.0
SS160-TT03-120	16.0	3.0	8.0	120.0
SS160-TT03-160	16.0	3.0	8.0	160.0
SS160-TT04-080	16.0	4.0	8.0	80.0
SS160-TT04-120	16.0	4.0	8.0	120.0
SS160-TT04-160	16.0	4.0	8.0	160.0
SS160-TT05-080	16.0	5.0	9.0	80.0
SS160-TT05-120	16.0	5.0	9.0	120.0
SS160-TT05-160	16.0	5.0	9.0	160.0
SS160-TT06-080	16.0	6.0	12.0	80.0
SS160-TT06-120	16.0	6.0	12.0	120.0
SS160-TT06-160	16.0	6.0	12.0	160.0

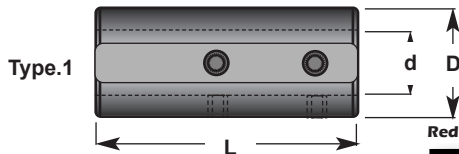
### Parallel Heat Shrink Extensions

CODE	D	d1	d2	L
SS200-TT06-080	20.0	6.0	12.0	80.0
SS200-TT06-120	20.0	6.0	12.0	120.0
SS200-TT06-160	20.0	6.0	12.0	160.0
SS200-TT08-080	20.0	8.0	16.0	80.0
SS200-TT08-120	20.0	8.0	16.0	120.0
SS200-TT08-160	20.0	8.0	16.0	160.0
SS200-TT10-080	20.0	10.0	16.0	80.0
SS200-TT10-120	20.0	10.0	16.0	120.0
SS200-TT10-160	20.0	10.0	16.0	160.0
SS200-TT12-080	20.0	12.0	18.0	80.0
SS200-TT12-120	20.0	12.0	18.0	120.0
SS200-TT12-160	20.0	12.0	18.0	160.0
SS250-TT12-080	25.0	12.0	18.0	80.0
SS250-TT12-160	25.0	12.0	18.0	120.0
SS250-TT14-080	25.0	14.0	22.0	80.0
SS250-TT14-160	25.0	14.0	22.0	160.0
SS250-TT16-080	25.0	16.0	22.0	80.0
SS250-TT16-160	25.0	16.0	22.0	160.0



### Imperial Parallel Shank to Jacobs Taper Arbors

CODE	Dia Shank	L	JT
A-226 0103 J02	1"	3"	J02
A-226 0103 J06	1"	3"	J06
A-226 0103 J33	1"	3"	J33
A-226 1221 J00	1/2"	2.1/2"	J00
A-226 1221 J01	1/2"	2.1/2"	J01
A-226 1221 J02	1/2"	2.1/2"	J02
A-226 1221 J06	1/2"	2.1/2"	J06
A-226 1221 J33	1/2"	2.1/2"	J33
A-226 3403 J01	3/4"	3"	J01
A-226 3403 J02	3/4"	3"	J02
A-226 3403 J06	3/4"	3"	J06
A-226 3821 J00	3/8"	2.1/2"	J00
A-226 3821 J01	3/8"	2.1/2"	J01
A-226 5821 J01	5/8"	2.1/2"	J01
A-226 5821 J02	5/8"	2.1/2"	J02
A-226 5821 J06	5/8"	2.1/2"	J06
A-226 5821 J33	5/8"	2.1/2"	J33

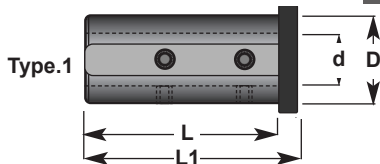


#### Reduction Sleeves Plain - Metric Diameter & Bores

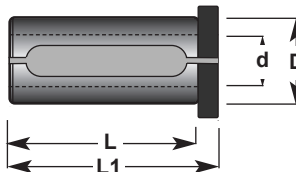
CODE	D	d	L	Type
SS200-BS06-060	20.0	6.0	60.0	1
SS200-BS08-060	20.0	8.0	60.0	1
SS200-BS10-060	20.0	10.0	60.0	1
SS200-BS12-060	20.0	12.0	60.0	1
SS250-BS06-060	25.0	6.0	60.0	1
SS250-BS08-060	25.0	8.0	60.0	1
SS250-BS10-060	25.0	10.0	60.0	1
SS250-BS12-060	25.0	12.0	60.0	1
SS250-BS14-060	25.0	14.0	60.0	1
SS250-BS16-060	25.0	16.0	60.0	2
SS320-BS06-070	32.0	6.0	70.0	1
SS320-BS08-070	32.0	8.0	70.0	1
SS320-BS10-070	32.0	10.0	70.0	1
SS320-BS12-070	32.0	12.0	70.0	1
SS320-BS14-070	32.0	14.0	70.0	1
SS320-BS16-070	32.0	16.0	70.0	1
SS320-BS20-070	32.0	20.0	70.0	1
SS320-BS25-070	32.0	25.0	70.0	2

#### Reduction Sleeves Plain - Metric Diameter & Bores

CODE	D	d	L	Type
SS400-BS06-080	40.0	6.0	80.0	1
SS400-BS08-080	40.0	8.0	80.0	1
SS400-BS10-080	40.0	10.0	80.0	1
SS400-BS12-080	40.0	12.0	80.0	1
SS400-BS16-080	40.0	16.0	80.0	1
SS400-BS18-080	40.0	18.0	80.0	1
SS400-BS20-080	40.0	20.0	80.0	1
SS400-BS25-080	40.0	25.0	80.0	1
SS400-BS32-080	40.0	32.0	80.0	2
SS500-BS12-090	50.0	12.0	90.0	1
SS500-BS16-090	50.0	16.0	90.0	1
SS500-BS20-090	50.0	20.0	90.0	1
SS500-BS25-090	50.0	25.0	90.0	1
SS500-BS32-090	50.0	32.0	90.0	1
SS500-BS40-090	50.0	40.0	90.0	2
SS600-BS16-160	60.0	16.0	160.0	1
SS600-BS20-160	60.0	20.0	160.0	1
SS600-BS25-160	60.0	25.0	160.0	1
SS600-BS32-160	60.0	32.0	160.0	1
SS600-BS40-160	60.0	40.0	160.0	1



Type.2

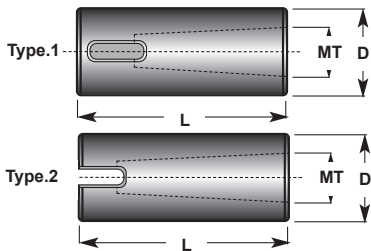


### Reduction Sleeves Plain - Metric Diameter & Bores

CODE	D	d	L	L1	Type
SS200-HS06-055	20.0	6.0	50.0	55.0	1
SS200-HS08-055	20.0	8.0	50.0	55.0	1
SS200-HS10-055	20.0	10.0	50.0	55.0	1
SS200-HS12-055	20.0	12.0	50.0	55.0	1
SS200-HS14-055	20.0	14.0	50.0	55.0	2
SS250-HS06-060	25.0	6.0	55.0	60.0	1
SS250-HS08-060	25.0	8.0	55.0	60.0	1
SS250-HS10-060	25.0	10.0	55.0	60.0	1
SS250-HS12-060	25.0	12.0	55.0	60.0	1
SS250-HS14-065	25.0	14.0	60.0	65.0	1
SS250-HS16-065	25.0	16.0	60.0	65.0	2
SS250-HS18-065	25.0	18.0	60.0	65.0	2
SS320-HS06-075	32.0	6.0	70.0	75.0	1
SS320-HS08-075	32.0	8.0	70.0	75.0	1
SS320-HS10-075	32.0	10.0	70.0	75.0	1
SS320-HS12-075	32.0	12.0	70.0	75.0	1
SS320-HS14-075	32.0	14.0	70.0	75.0	1
SS320-HS16-075	32.0	16.0	70.0	75.0	1
SS320-HS18-075	32.0	18.0	70.0	75.0	1
SS320-HS20-075	32.0	20.0	70.0	75.0	1
SS320-HS25-075	32.0	25.0	70.0	75.0	2

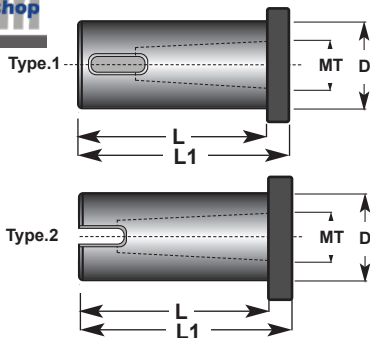
CODE	D	d	L	L1	Type
SS400-HS06-085	40.0	6.0	80.0	85.0	1
SS400-HS08-085	40.0	8.0	80.0	85.0	1
SS400-HS10-085	40.0	10.0	80.0	85.0	1
SS400-HS12-085	40.0	12.0	80.0	85.0	1
SS400-HS14-085	40.0	14.0	80.0	85.0	1
SS400-HS16-085	40.0	16.0	80.0	85.0	1
SS400-HS18-085	40.0	18.0	80.0	85.0	1
SS400-HS20-085	40.0	20.0	80.0	85.0	1
SS400-HS25-085	40.0	25.0	80.0	85.0	1
SS400-HS32-085	40.0	32.0	80.0	85.0	2
SS500-HS12-095	50.0	12.0	90.0	95.0	1
SS500-HS16-095	50.0	16.0	90.0	95.0	1
SS500-HS18-095	50.0	18.0	90.0	95.0	1
SS500-HS20-095	50.0	20.0	90.0	95.0	1
SS500-HS25-095	50.0	25.0	90.0	95.0	1
SS500-HS32-095	50.0	32.0	90.0	95.0	1
SS500-HS40-095	50.0	40.0	90.0	95.0	2
SS600-HS20-140	60.0	20.0	135.0	140.0	1
SS600-HS25-140	60.0	25.0	135.0	140.0	1
SS600-HS32-140	60.0	32.0	135.0	140.0	1
SS600-HS40-140	60.0	40.0	135.0	140.0	1
SS600-HS50-140	60.0	50.0	135.0	140.0	2





**Parallel Metric Morse Taper Sleeves - Plain**

CODE	D	MT	L	Type
SS200-MT1-060	20.0	1	60.0	2
SS200-MT2-060	20.0	2	60.0	1
SS250-MT1-075	25.0	1	75.0	2
SS250-MT2-090	25.0	2	90.0	1
SS320-MT1-100	32.0	1	100.0	2
SS320-MT2-084	32.0	2	84.0	1
SS320-MT3-098	32.0	3	98.0	2
SS400-MT2-090	40.0	2	90.0	1
SS400-MT3-100	40.0	3	100.0	2
SS400-MT4-120	40.0	4	120.0	2
SS500-MT2-084	50.0	2	84.0	1
SS500-MT3-098	50.0	3	90.0	2
SS500-MT4-120	50.0	4	120.0	2
SS600-MT3-160	60.0	3	160.0	1
SS600-MT4-160	60.0	4	160.0	1
SS600-MT5-160	60.0	5	160.0	2



**Parallel Metric Morse Taper Sleeves - Headed**

CODE	D	MT	L	L1	Type
SS250-HMT1-075	25.0	1	70.0	75.0	2
SS250-HMT2-075	25.0	2	70.0	75.0	2
SS250-HMT3-098	25.0	3	93.0	98.0	2
SS320-HMT1-090	32.0	1	85.0	90.0	1
SS320-HMT2-090	32.0	2	85.0	90.0	1
SS320-HMT3-100	32.0	3	95.0	100.0	2
SS400-HMT2-110	40.0	2	105.0	110.0	1
SS400-HMT3-110	40.0	3	105.0	110.0	1
SS400-HMT4-125	40.0	4	120.0	125.0	2
SS500-HMT2-130	50.0	2	125.0	130.0	1
SS500-HMT3-130	50.0	3	125.0	130.0	1
SS500-HMT4-130	50.0	4	125.0	130.0	1